

# GPSdome2

## DATASHEET

GPSdome2 provides protection against GPS jamming, ensuring continuity of autonomous navigation and operation during jamming conditions. It is compatible with almost any GNSS off-the-shelf receiver. Using up to 4 off-the-shelf active antennas, with dual-band protection it protects from up to 3 jamming directions simultaneously in each band.

No other solution that offers such protection is as small, light, affordable, retrofit or as easily installed as GPSdome2.



## GNSS Multi-Band 4-Element Anti-Jamming

### Key Features

- C-SWAP optimized
- Supports 2-4 elements (antennas)
- Up to 3 null attenuation in each frequency (number of antennas -1)
- Minimally packaged null steering technology
- Average power consumption < 9W
- Peak power consumption: < 16W
- Retrofit – Plug and Play solution
- Protected frequencies (either):
  - GPS L1/Galileo E1 + GPS L2
  - GPS L1/Galileo E1 + GLONASS G1
- Passthrough unprotected frequencies GPS L2 or L5 or GLONASS G1
- Intelligence gathering capabilities enhancing situational awareness via UART – allows for real-time threat heat map creation
- Compatible with most off-the-shelf active GNSS antennas
- Optimal position antenna arrangement (>10cm apart)

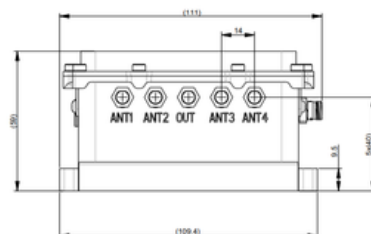
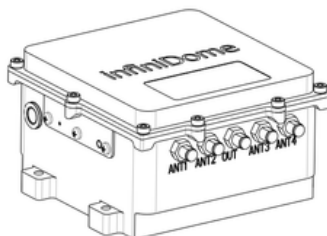
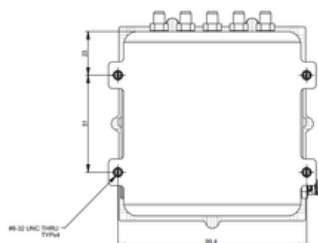


**Small • Simple • Flexible • Retrofit**

# Product Specifications

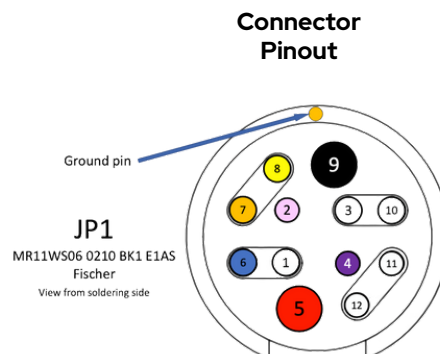
Physical		Performance		Environmental	
Dimensions	99.4 x 95.7 x 56mm	Protected Signal	L1/E1 + L2 L1/E1 + G1	Operating Temperature Range	-40°C to 71°C
Weight	500g	Latency	~100ns	Waterproof Rating	IP65
Mounting	4 x 8-32 bolts (not supplied)	Compression Point	P1dB -25dBm	Safety & Compliance	
EPS Product Wire		Insertion Loss	6dB	RoHS Compliant	
Red	Power supply positive terminal (6vdc-32vdc)	LED Indication		CE Compliant	
Black	Power supply negative terminal	Constant Red	System Error	FCC Compliant	
Purple	Dry contact jamming indication – positive terminal	Flashing Red	System Initialization	Optional Connector MR11WS06 0210 BK1 E1AP 1	
Green	Dry contact –jamming indication – negative terminal	Constant Green	System Operating (no jamming detected)	UART (3.3V)	Pin 5
Orange	UART RX UART TX UART GND	Alternating Between Orange and Green	System Operating (jamming detected)	GND	Pin 9
Yellow		RF Interfaces		Dry contact	Dry contact – pin 2 Dry contact + 4
Blue		Antenna Connectors	50Ω SMA 2.5VDC-5VDC (Active antenna with gain range between 26dB to 32dB)	5VDC – 32VDC	RX Pin 7 TX Pin 8 GND Pin 6
		Receiver Connector (R)	50Ω SMA		

## Product Dimensions



## Ordering Information

GPSdome2 — X X — X — X X — X			
Protected frequency: 1 – GPS L1 2 – GPS L2 3 – GPS L5 4 – GLONASS G1	Connector/ Cable C – connector E – external cable	Passthrough frequency (optional): 0 – null 1 – GPS L1 2 – GPS L2 3 – GPS L5 4 – GLONASS G1	Receiver (optional) 1 – ublox M8N 2 – ublox F9P



**infiniDome, Ltd**

7 Ha'eshel St. Industrial Park (South), P.O. Box 3358, Caesarea 3079504, Israel  
info@infinidome.com • www.infinidome.com