

GPSdome2

DATASHEET

GPSdome2 protects against GPS jamming, ensuring continuity of autonomous navigation and operation during jamming conditions. It is compatible with almost any GNSS off-the-shelf receiver. Using up to 4 off-the-shelf active antennas, with dual-band protection it protects from up to 3 jamming directions simultaneously in each band.

No other solution that offers such protection is as small, light, affordable, retrofit or as easily installed as GPSdome2.



GNSS Multi-Band 4-Element Anti-Jamming

Key Features

- C-SWAP optimized
- Supports 2-4 elements (antennas)
- Up to 3 null attenuation in each frequency (number of antennas -1)
- Minimally packaged null steering technology
- Average power consumption < 9W
- Peak power consumption: < 16W
- Retrofit – Plug and Play solution
- Protected frequencies (either):
 - GPS L1 /Galileo E1 + GPS L2
 - GPS L1/Galileo E1 + GLONASS G1
- Passthrough unprotected frequencies GPS L2 or L5 or GLONASS G1
- Intel gathering capabilities
- Compatible with most off-the-shelf active GNSS antennas
- Optimal position antenna arrangement (>10cm apart)

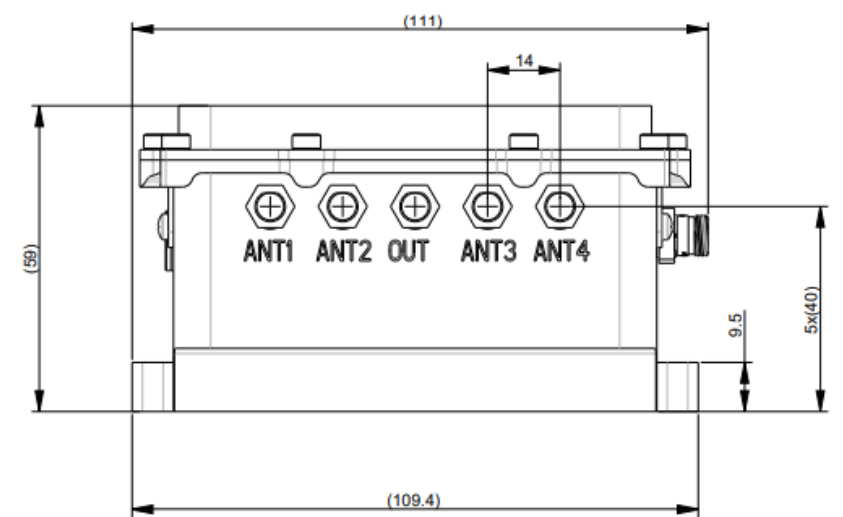
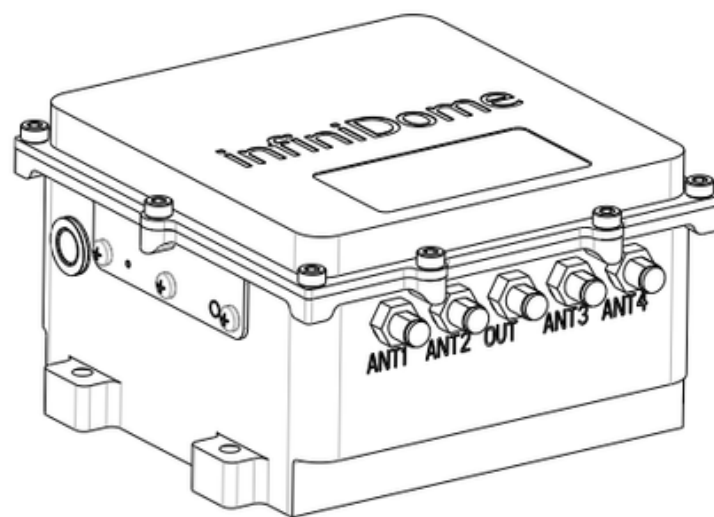
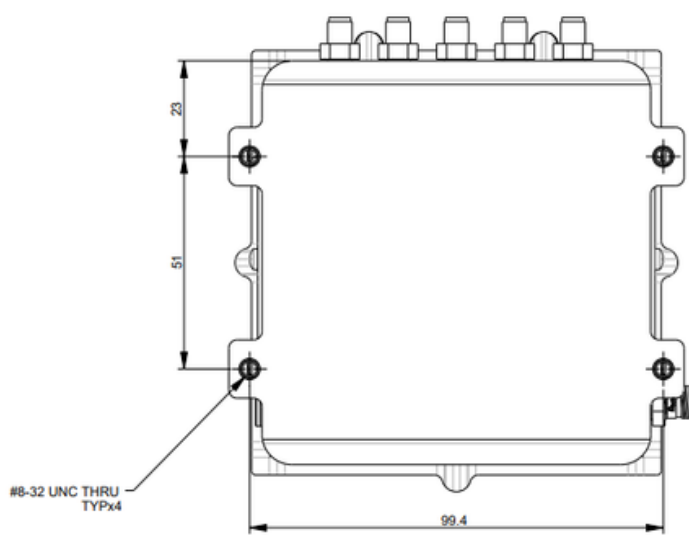
Small • Simple • Flexible • Retrofit



Product Specifications

Physical		Performance		Environmental	
Dimensions	99.4 x 95.7 x 56mm,	Protected Signal	L1/E1+L2 L1/E1+G1	Operating Temperature Range	-40°C to 71°C
Weight	500g	Latency	~100ns	Waterproof Rating	IP65
Mounting	4 x 8-32 bolts (not supplied)	Compression Point	P1dB -25dBm	Safety & Compliance	
EPS Product Wire		Insertion Loss	6dB	RoHS Compliant	
Red	Power supply positive terminal (6vdc-32vdc)	LED Indication		CE Compliant	
Black	Power supply negative terminal	Constant Red	System Error	FCC Compliant	
Purple	Dry contact jamming indication – positive terminal	Flashing Red	System Initialization	Optional Connector	
Green	Dry contact –jamming indication – negative terminal	Constant Green	System Operating (no jamming detected)	MR11WS06 0210 BK1 E1AP 1	
Orange Yellow Blue	UART RX UART TX UART GND	Alternating Between Orange and Green	System Operating (jamming detected)	UART (3.3V)	Pin 5
		RF Interfaces		GND	Pin 9
		Antenna Connectors	50Ω SMA 2.5VDC-5VDC (Active antenna with gain range between 26dB to 32dB)	Dry contact	Dry contact - pin 2 Dry contact + 4
		Receiver Connector (R)	50Ω SMA	5VDC – 32VDC	RX Pin 7 TX Pin 8 GND Pin 6

Product Dimensions



Ordering Information

GPSdome2 — X — X — X — X — X

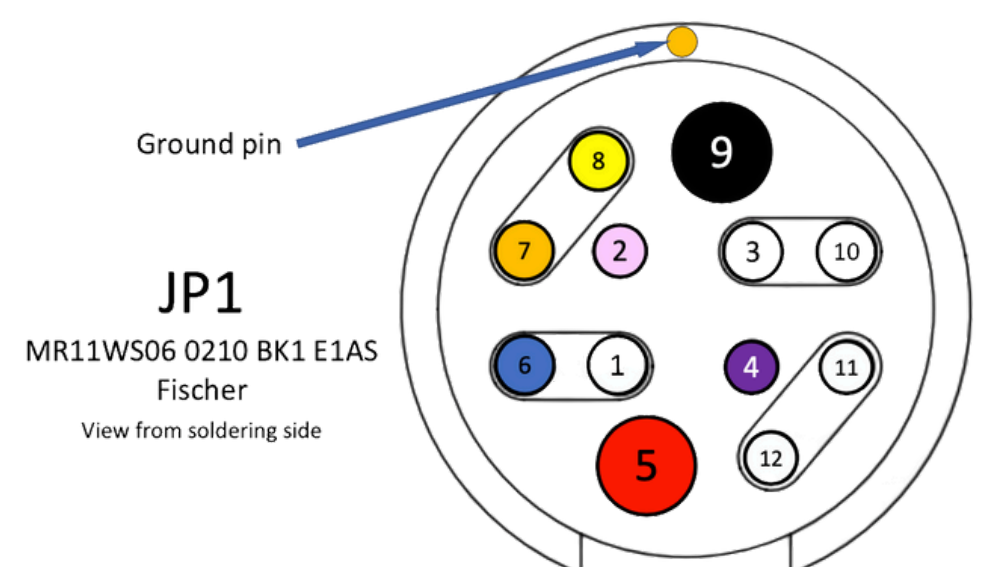
Protected frequency:
1 – GPS L1
2 – GPS L2
3 – GPS L5
4 – GLONASS G1

Connector/Cable
C – connector
E – external cable

Passthrough frequency (optional):
0 – null
1 – GPS L1
2 – GPS L2
3 – GPS L5
4 – GLONASS G1

Receiver (optional)
1 – ublox M8N
2 – ublox F9P

Connector Pinout



infiniDome, Ltd

7 Ha'eshel St. Industrial Park (South), P.O. Box 3358, Caesarea 3079504, Israel
info@infinidome.com • www.infinidome.com